



*Innovation through the dialogue
between knowledge fields*

European by nature

Located at the heart of Europe

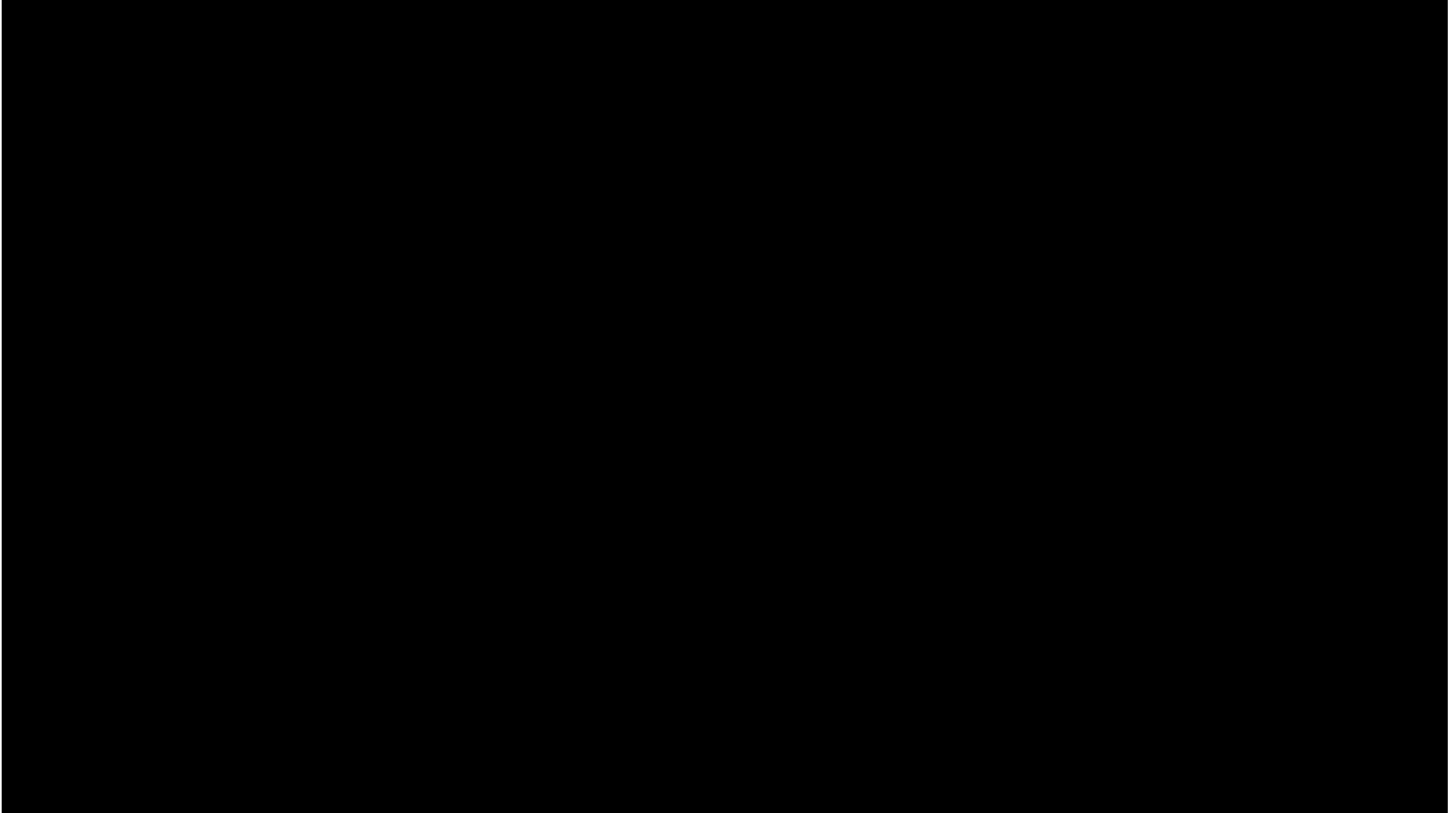


90 min
from Paris
by train



UNIVERSITÉ
DE LORRAINE

Key figures



Key numbers

INITIAL EDUCATION

>60 000
Students
17.4% international
students

BUDGET

630 million euro

HUMAN RESOURCES

3,900
Faculty
13,7% intl

3,000
Technical
& Admin Staff



Founded in 1572
Merger of 4
former universities
in 2012

FACILITIES

54 locations
in Lorraine
900 000 m²
for **262** buildings

60 libraries

About 12000
students involved
in entrepreneurship
programs

RESEARCH

60 research centers
175 patent families
1,809 PhD students
14% international joint PhDs
1/3 of scientific
publications are co-written
with foreign scientists



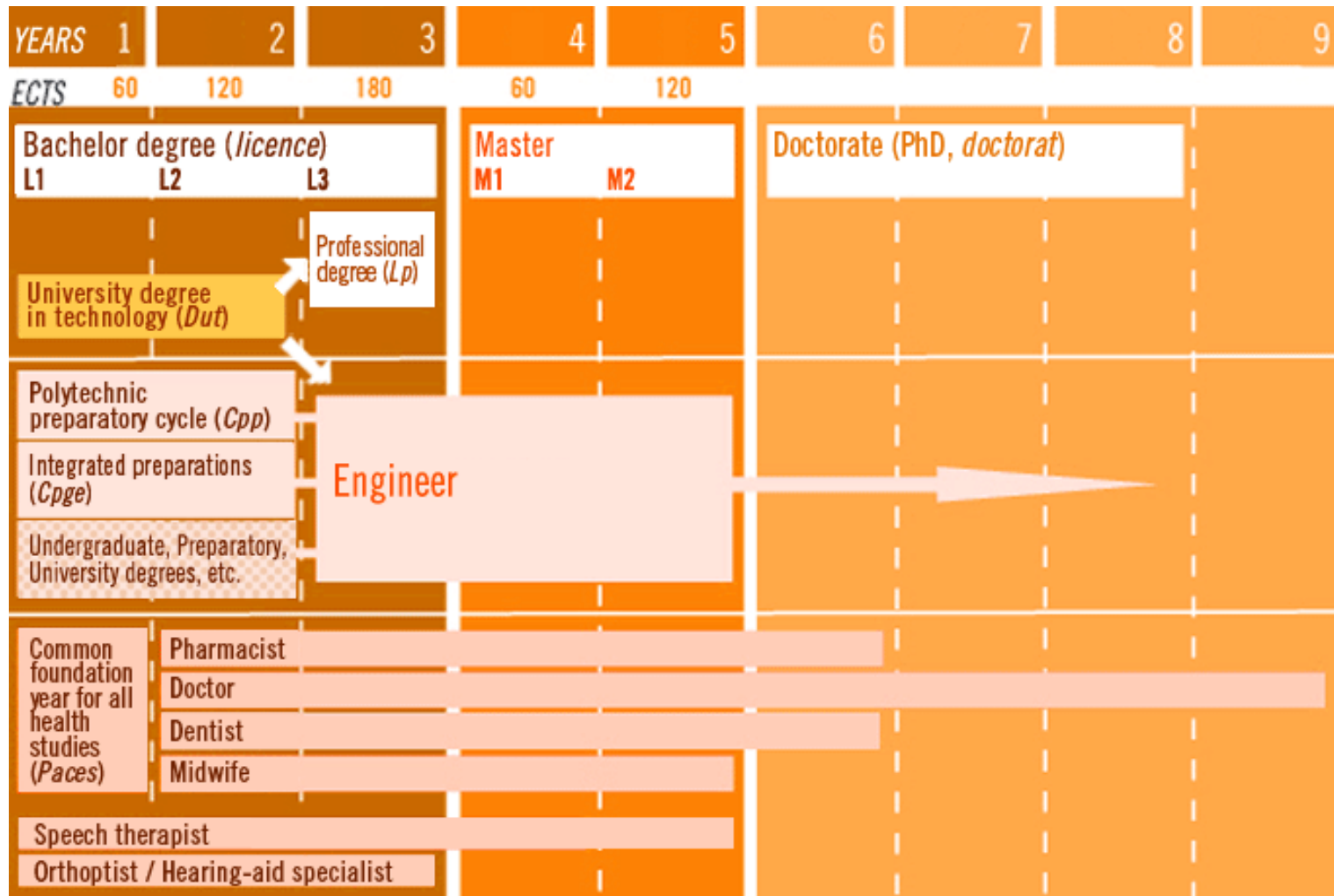
**UNIVERSITÉ
DE LORRAINE**

Main education areas

- Science and Technology
- Graduate Schools of Engineering
- Undergraduates in Technology
- Health, Pharmacy, Odontology, Sport
- Law, Economy
- Management, Innovation
- Humanities and Social Sciences
- Arts, Literature, Languages
- Teacher training, Adult training (LLP)



Bachelor – Master – Doctorate – Bologna process

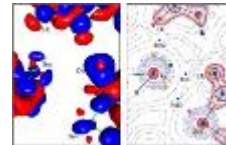


World-class research



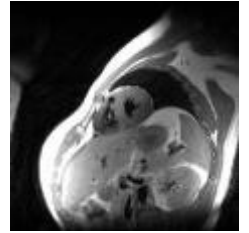
HR EXCELLENCE IN RESEARCH

- Covers all disciplinary fields: Human and Social Science, Science and Technology, Life and Environment Science
- Fostered by the needs in economical development of the former Lorraine Region: Forestry, agriculture, mining, metallurgy, chemistry ...



World-class research

- Strong fundamental basis in each disciplinary field
- High-level scientific infrastructures and equipment
- Extensive cooperation with companies



IRM for
organs in
motion



Plant Advanced
Technologies
& Biomolecule
Production



International space missions

Ageing &
health:
Connected
living places



Tube Daum
Elaboration and
characterization
of materials



Pilot plant for
biomass
gasification



Language
engineering



Pilot plant for mineral processing, experimental farm, imaging platforms « electronic, X and photonic imaging », « omics » platforms, Instrumented reactors, Computer High Security Lab, knowledge corpora, NLP, ...

10 Scientific areas & 60 research centers

- Agronomy, food, forest (A2F)
- Geosciences (OTELo)
- Biology, medicine, health (BMS)
- Chemistry and molecular physics (CPM)
- Energy, mechanics, process, products (EMPP)
- Matter, materials, metallurgy, mechanics (M4)
- Computer science, automation, control, electronics, mathematics (AM2I)
- Knowledge, language, communication, societies (CLCS)
- Law and economy sciences, politics, management (SJPEG)
- Time, spaces, literature, languages (TELL)



**3 labs of excellence : Rare Metals, Lightweight Materials, Tree & Wood
+550 international scientists / year**











International/French visibility – ARWU 2018

Topic	2018 France ranking	2018 World ranking
Mining & mineral engineering	1	24
Automation & Control	2	39
Metallurgical engineering	3	48
Public health	1	50
Chemical Engineering	1	76-100
Mechanical Engineering	2-5	76-100
Agricultural Sciences	5-6	76-100
Earth Sciences	11-16	101-150
Mathematics	17-21	101-150
Materials Science & Eng.	7-12	151-200
Food Science & Technology	5-9	151-200
Clinical Medicine	7-8	151-200



UNIVERSITÉ
DE LORRAINE

Doctoral schools

ED CQ 2018 - 2022		Co-accreditation Institutions (diplomas delivered)	Other partners (no diploma delivered)
BioSE 	Biose (ED n° 266) – Dir Patrick MENU Biology Health Environment		
IAEM 	IAEM (ED n° 77) Dir. : Didier MAQUIN Computer sc, Automation, Electronics, Maths	Centrale Supelec	ENS Archi Nancy INRIA
C2MP 	C2MP (ED n° 606) Dir : Dominique DALOZ Chemistry & physical chemistry of products, Mechanics, Materials sc, Physics	Centrale Supelec	
SIMPPE 	SIMPPE (ED n° 608) dir : Christine GERARDIN Molecules, Products, Processes & Energy science & engg		
SIReNa 	SIReNa (ED n° 607), Dir: Jérôme STERPENICH Natural Ressources science & engg	AgroParisTech	INRA
SIPEG 	SIPEG (ED n° 79) Dir.: Jean-Noël ORY Law, Political Sc, Economics & Management		AgroParisTech
HUMANITÉS NOUVELLES 	New Humanities Fernand-Braudel (ED n° 411) Dir. : Béatrice FLEURY		ENS Archi Nancy Institut Catholique de Paris
SLTC 	SLTC (ED n° 78) Dir : Cécile BERTRAND- DAGENBACH Societies, Languages, Time, Knowledge		Ecole Nationale Supérieure d'Art et Design de Nancy

Education to and through research

Diplomas:

Master, PhD (- Habilitation)



• In a Doctoral School

- Scientific training

and a Research Group

- Methodological, interdisciplinary education, preparation to professional activities

- 14% of joint PhDs out of ~1800 PhD candidates
- 46% of total are international PhD candidates
- 23% of total have a non-French Master degree (i.e. come directly from abroad)



UNIVERSITÉ
DE LORRAINE

HR EXCELLENCE IN RESEARCH



Main partners in the region



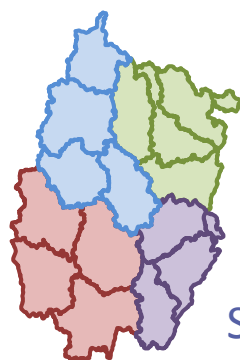
Regional innovation ecosystem



INSTITUT LAFAYETTE



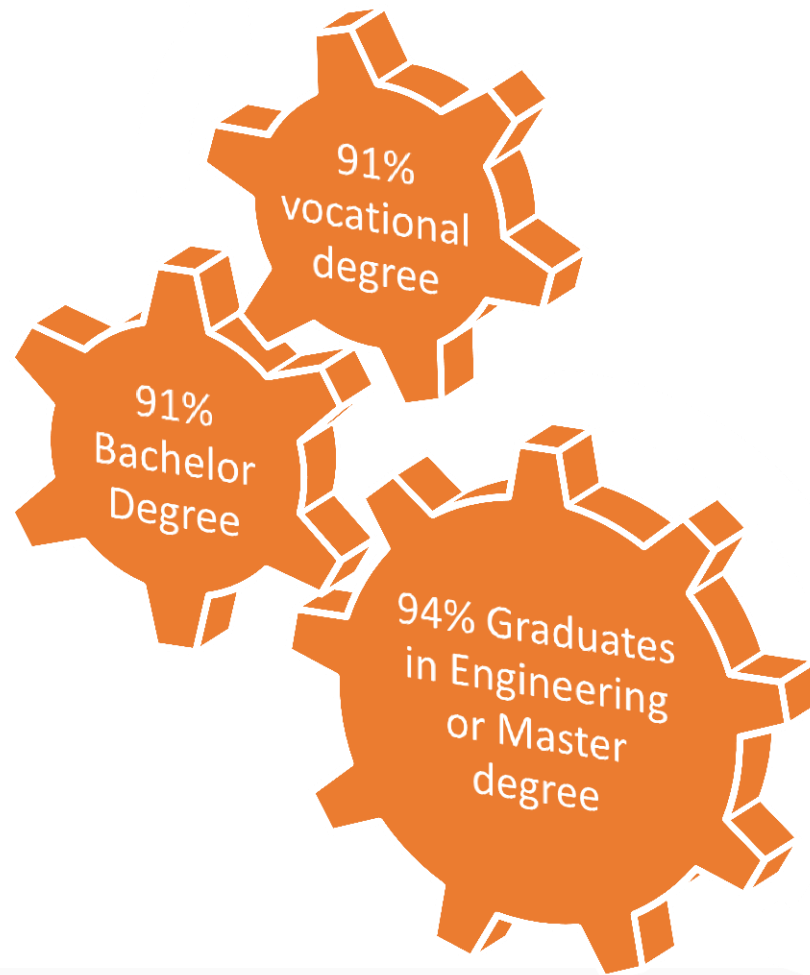
GISFi



SATT Grand Est



Employability within one year after graduation



Ambition : Build a model for a multidisciplinary, technological and entrepreneurial university





- Complete value chain for materials
- Sustainable management of natural resources and environment
- Energies for the future

Compact
governance



2015

Research contracts with
industry: +20%
50 new startups

2020

International MSc: + 30%
Graduated PhDs: +100 / year
Top 1% publications : +200%

2023

80% means for well-defined
core perimeter

20% to build a momentum for
the whole ecosystem

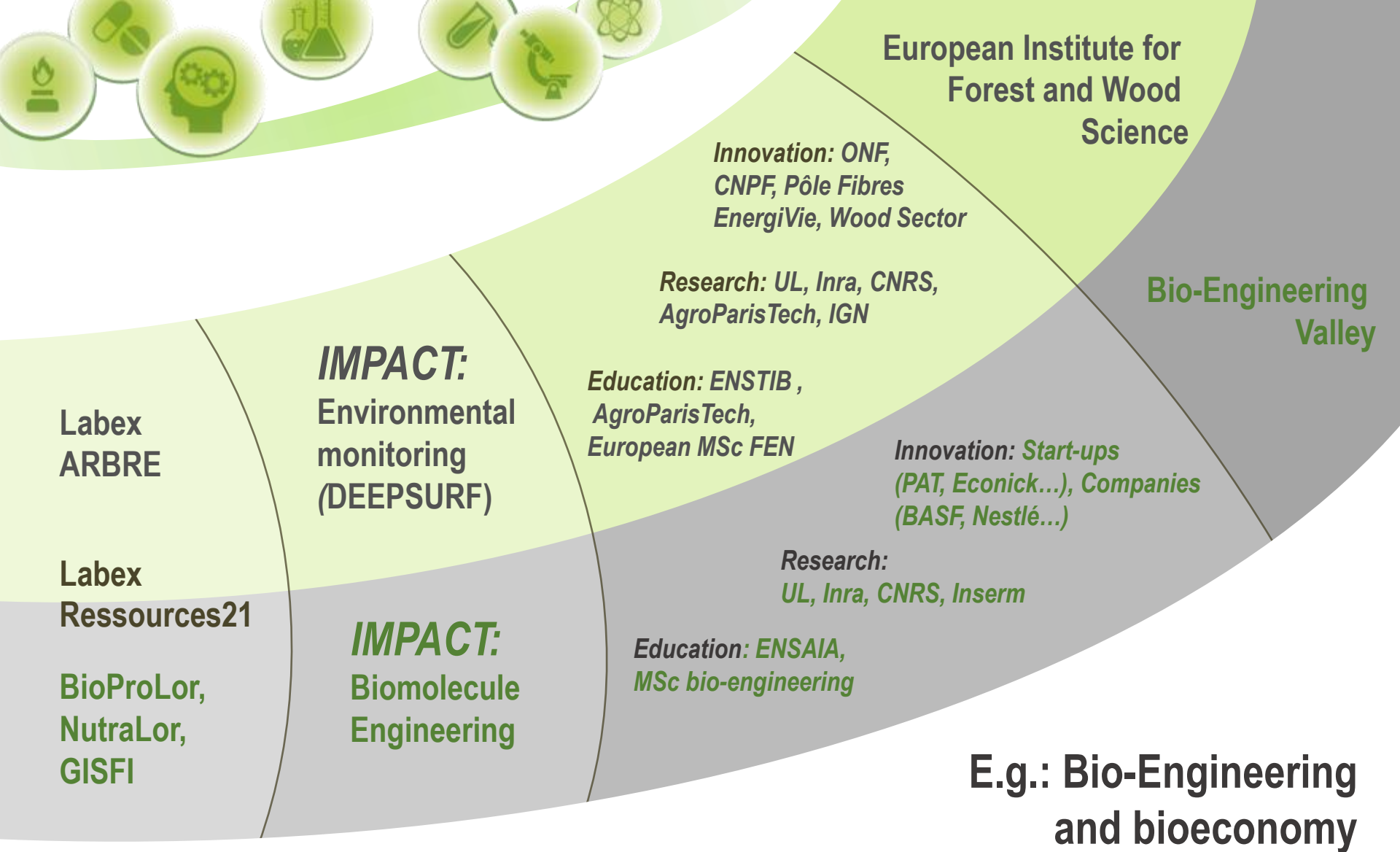


**Shanghai
Engineering
Top 100**

2025

Trust in the digital world ●
Personalized medicine &
engineering for health / ageing ●
Knowledge engineering ●

Ambition and trajectory



**Building integrated education,
research & innovation ecosystems**

Entrepreneurial training



- | | |
|--------|---|
| #1 | • First entrepreneurial university in France (2015-2016-2017) |
| 12 000 | • Students informed (+ 20 000 through social networks) |
| 287 | • Student entrepreneurs / year |
| 192 | • Initiatives |
| with | • Specific methods |



Learn to design, learn to combine
Learn to take risks
Learn to use networks



Lifelong learning programs



12,000

1,700

€ 9 M

1,000

500

150

100

- Trainees each year
- Lifelong learning diplomas
- Budget
- Job seekers
- Short internships
- E-learning modules
- Candidates to Validation of Professional Experience

Innovative tools:

- Personalized Pedagogic Workshops
- Skills assessment center
- Transfer and Innovation Workshops for SMEs
- ISO 9001 service



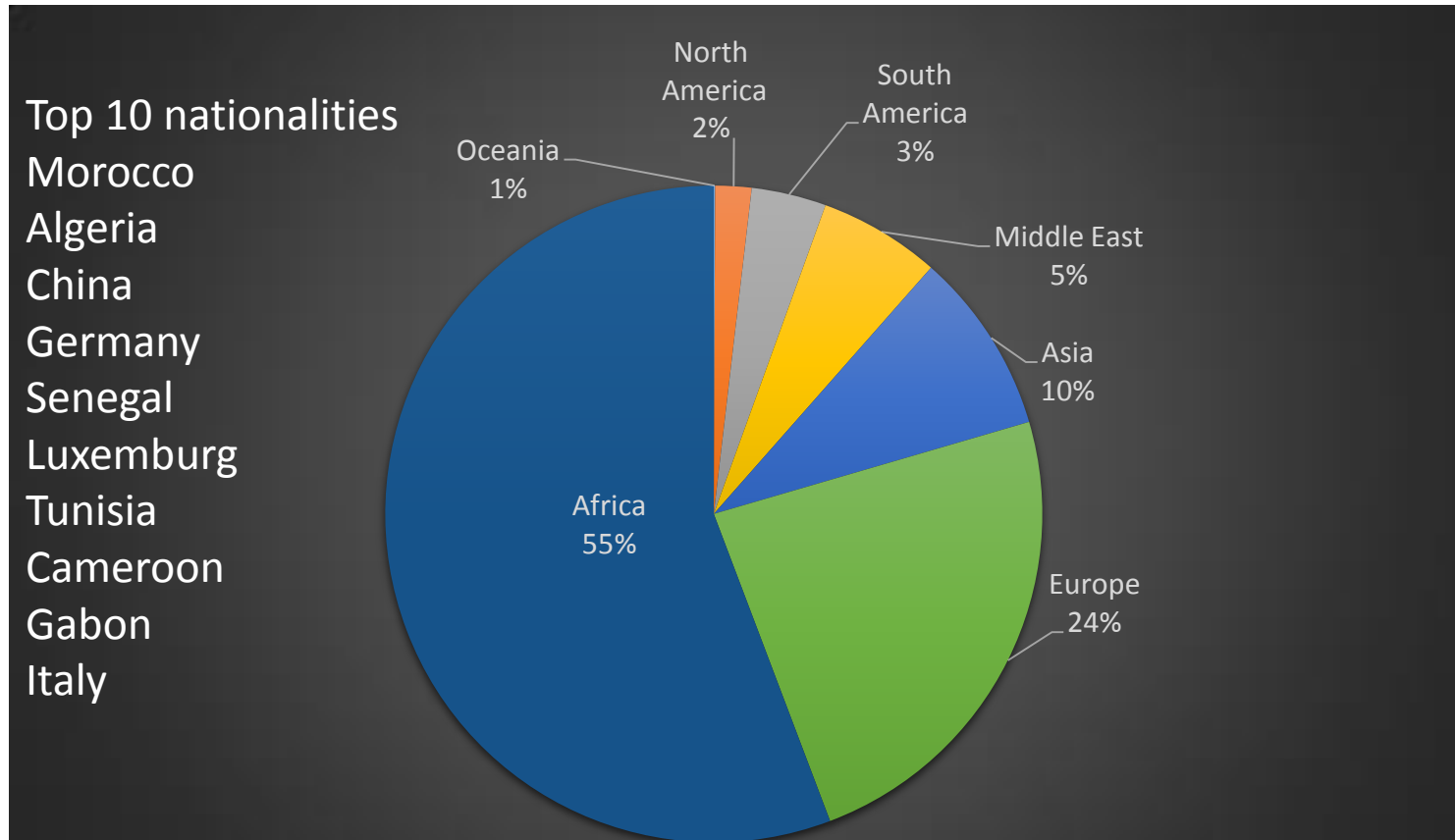
UNIVERSITÉ
DE LORRAINE

International Student Mobility

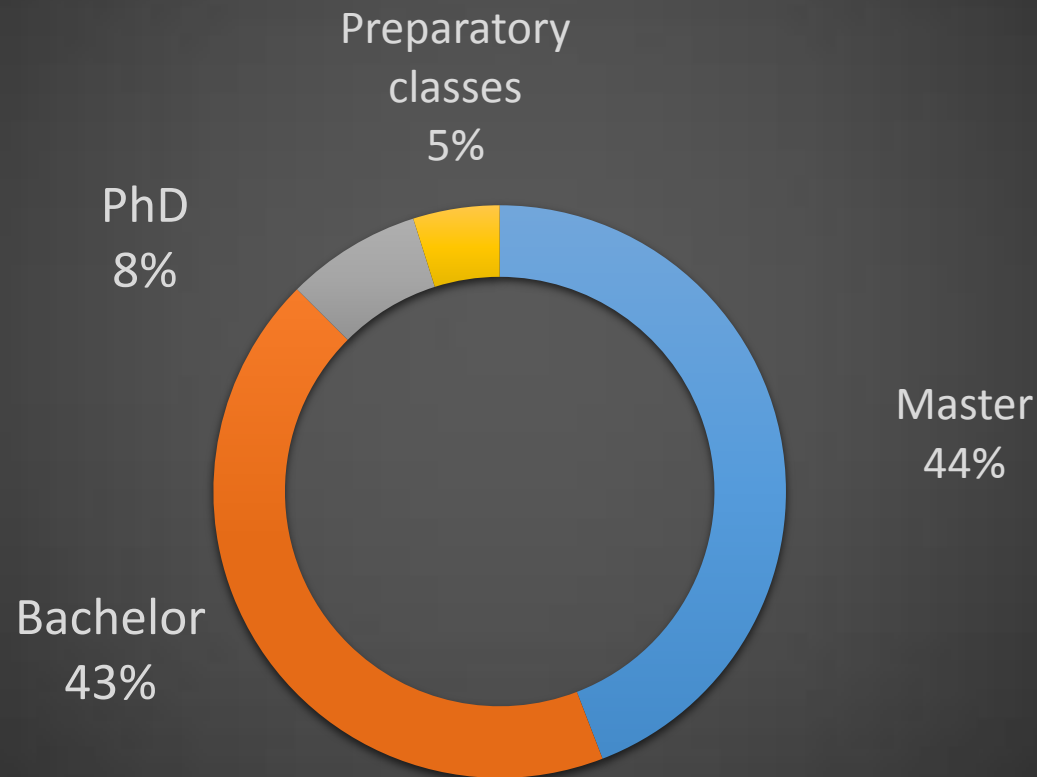


10,455 International students from 145 countries
(1/4 European, 1/2 from French speaking countries)
860 International PhD Students

Incoming students



Incoming students / level of studies



Wide open to the world

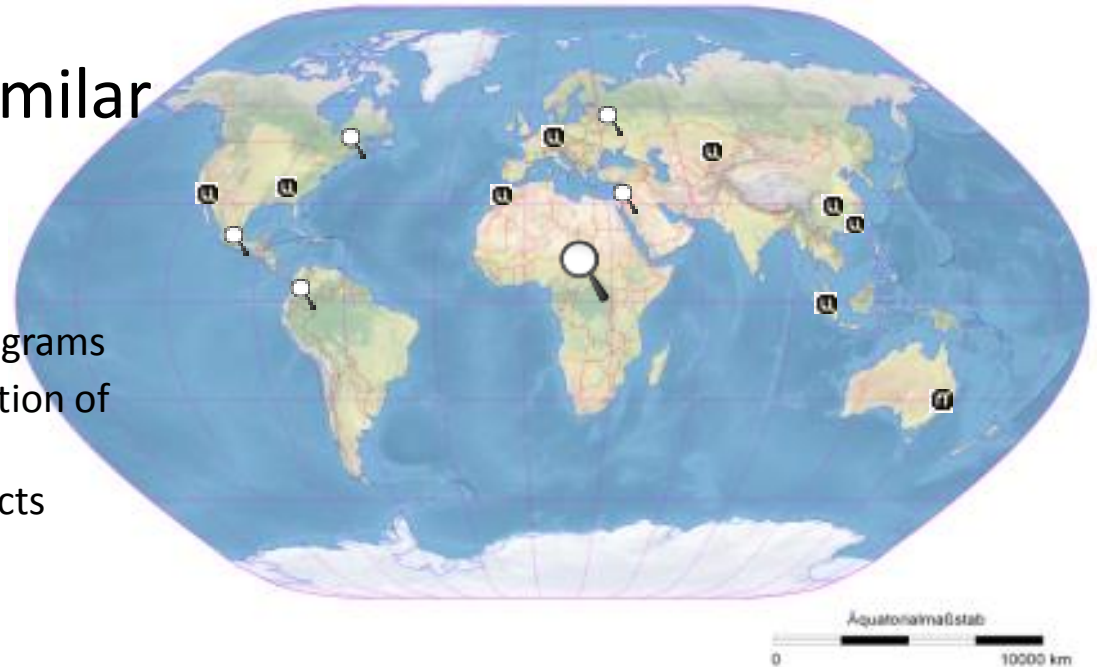
Member of EUA, EUF, AUF

Our ambition:

Establish strategic partnerships with universities having similar profiles

Objectives :

- double diplomas and joint programs
- mutual recognition and validation of courses
- joint labs, joint research projects
- joint PhD, joint publications



A European University



- French-German strategy
- First French university for European outgoing mobility
- 8 Erasmus Mundus Joint Master Degrees
- LUE Future Leader ERC Track
- H2020, MCSA...

6 universities
4 countries
3 teaching languages

135.000 students
7.000 PhD
candidates
10.000 faculty
members



UNIVERSITÉ DE LA
GRANDE RÉGION
UNIVERSITÄT DER
GROSSREGION

Achievements:

- **Mobility and cross border studying** (UniGR student status, mobility funds)
- Support the creation and operation of **joint study programs (19)**
- **Common research:** support of joint research projects – **3 key areas**
Biomedicine – border studies –
Materials and resource efficiency
about 20 supported projects
- **Common structure: UniGR a.s.b.l.**
- **Project factory**

Extra curricular activities

More than **70 sport activities** – from beginner to expert level



Arts programs
Theatre
UL symphonic orchestra
Popularization of Science programs
Social networking
Intercultural activities
Language development programs



Pag



UNIVERSITÉ
DE LORRAINE

Free to join
for all UL
Students



Student life

- Health insurance provided to the students, social services
- Accommodation + cost of living = 650 € per month
- Close to Paris by TGV train (90 minutes)
- Close to Luxembourg, Germany, Netherlands, Belgium, Italy, Switzerland, Czech Republic....
- Student cities : about 49 000 students for about 266 000 inhabitants in Greater Nancy Metropolis and about 23 000 students for about 230 000 inhabitants in Metz Metropolis



Living in Nancy



Living in Metz





Thank you for your attention

