



ROYAL INSTITUTE
OF TECHNOLOGY

KTH Royal Institute of Technology

On the forefront of Scientific Innovation



An introduction to Sweden



In the heart of Scandinavia

Home of the Nobel Prize

A culture of innovation
and entrepreneurship

Stockholm – one of the most livable cities in the world

- Nobel Prize Award Ceremony
- One of the most livable cities in the world according to Monocle
- Tight relationship between academia and business
- UN Human Development Index
- Early adopters of new technology and trends
- Clean, tidy, safe
- English speaking



KTH at a glance



- Sweden's largest, oldest and most highly regarded technical university
- Leading research institution
- Maintains partnerships with international elite universities
- Hosts four EIT Communities



ROYAL INSTITUTE
OF TECHNOLOGY

KTH among the top ten in Europe



In the prestigious Times Higher Education ranking 2013, KTH is ranked as no 117 among the world's universities.

KTH is also

- 34th among the world's technical universities
- 6th among Europe's technical universities

Famous alumni



Professor Hannes Alfvén, Börje Ekholm, Minoo Akhtarzand, Professor Christer Fuglesang

- One Nobel Prize in Physics
- More than 75 000 alumni
- Over 12 000 alumni registered in the network
- 70 % get their dream job

KTH research platforms

- **Energy**

Technologies and systems supporting sustainable global energy systems.

- **Information and Communication Technology**

Focuses on fields such as microelectronics, nanotechnology, photonics and wireless sensor networks.



KTH Research platforms cont.

- **Materials**

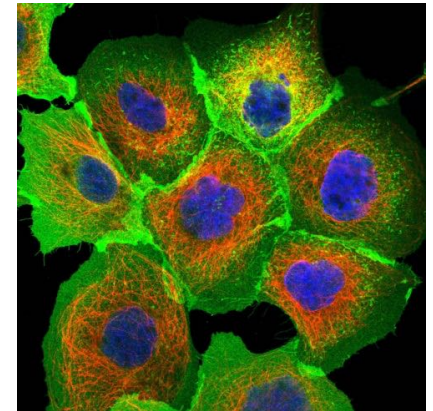
Spans from chemistry, fibre and polymer technology to biotechnology, mechanics and process technology.

- **Medical and Biomedical Technology**

Recognised international research leader in the borderland between technology, natural sciences and medicine, including e g the mapping of all human proteins.

- **Transport**

Various disciplines, from vehicle technology and infrastructure to policy formulation and evaluation.



Eleven areas, 50 degree programmes

- Architecture and the Built Environment
- Biotechnology, Chemistry and Chemical Engineering
- Electrical Engineering
- Energy and Sustainable Development
- Industrial Management
- Information Technology
- Materials Science and Engineering
- Mathematics
- Mechanical Engineering
- Physics
- Technology and Health





ROYAL INSTITUTE
OF TECHNOLOGY

Quality assurance at KTH

Quality assurance at KTH

The quality process at KTH is to be based on the principle of continuous improvement. This means that quality work is a constant, on-going process. It also means that responsibility for quality is carried by the individual student, teacher and employee in their daily actions.

Quality assurance at KTH

Quality Policy at KTH

The document summarizes quality work at the university

All important information is collected in one place

Quality work at KTH

Roles and responsibilities in quality assurance

- The Faculty Council has overall responsibility for issues relating to the quality of education, research and community interaction. The Council is chaired by the Dean of Faculty. It represents the entire faculty and acts as an advisory body to the President.
- The KTH Schools are responsible for the quality of their own operations. Each school is headed by a Dean. Each school appoints a Director of Undergraduate and Masters' Studies, and a Director of Doctoral studies.

Quality work at KTH

Roles and responsibilities in quality assurance

- The President and University Board are responsible for internal organisation issues and financial management. The University Administration supports university management in e.g. policy making, coordination, planning and evaluation. Within the University Administration, the Planning and Evaluation Office provides support on quality assurance matters.

Quality policy at KTH

Systematic quality work carried out at KTH is to be characterised by proactivity, participation, engagement and visibility.

All groups at the university, including undergraduate and postgraduate students, have a collegiate responsibility for and are assumed to participate in quality work, which is to be integrated into daily activities at all levels.

The Faculty Council has overall responsibility for issues relating to the quality of education, research and community interaction.

Quality work at KTH

KTH quality work is to be based on four areas:

- 1.Education
- 2.Research
- 3.Supply of skills
- 4.Collaboration

Quality work at KTH

KTH produces annual quality report:

- KTH produces an annual report of its quality work. The report provides an overall picture of quality assurance activities and achievements in a particular year. The main purpose is to increase the visibility of quality work at KTH.

Quality work at KTH

Regular international evaluations of performance

- Research Assessment Exercise (RAE 2012)
- Education Assessment Exercise (EAE 2011)
- Administrative Assessment Exercise (AAE 2014)



ROYAL INSTITUTE
OF TECHNOLOGY

Welcome to KTH!

